



THE BOURNE ACADEMY

# COMMUNITY LETTINGS AND VENUE HIRE



*"Everyone at the school was so helpful and polite  
and it was a pleasure to hold our event there."*

**Tracy Melling, Development Director  
Dorset Community Foundation**



## Welcome

Here at The Bourne Academy we are fortunate to have excellent facilities which are available for hire. If you are considering holding an event or running club/group activities, we have various options you can choose from.

We have an extensive variety of indoor areas, such as a large hall, dance, drama and music studios and numerous learning areas. Unique to the Academy is The Lawn, an inside/outside space which is ideal for smaller events such as fitness groups or corporate social gatherings.

All areas can make full use of our state of the art sound/IT equipment and technicians which will be charged for as required on the day. Let us quote for the entire package.



### The Lawn

**£50 per hour**

**£150 half day (4 hours)**

**£200 full day**



### **The Lawn**



### **The Hub**

### The Hub

**£50 per hour**

**£150 half day (4 hours)**

**£200 full day**

- ◇ 215sqm
- ◇ 250 seated
- ◇ 320 standing
- ◇ Projector
- ◇ Lighting rig
- ◇ PA system
- ◇ Portable staging
- ◇ Doors to The Courtyard and The Lawn



All areas are light and airy, centrally heated and suitable for conferences, meetings, keep fit, training, educational courses, corporate events and much more...

Wifi is available throughout the Academy and all our facilities have direct access from the (free) car park and are suitable for disabled access. There are 80 car parking spaces (4 disabled) in the internal car park and 46 spaces in the pick up/drop off car park situated at the front of the Academy. There is CCTV on site, and security staff are present at all times during your visit.

**Included:**

Disabled access, toilet facilities  
heat, lighting, security and cleaning

**Possible extras:**

IT equipment, sound equipment,  
engineers, breakout rooms,  
catering and printing resources



**The Boardroom**

**£30 per hour**

**£75 half day (4 hours)**

**£100 full day**

- ◇ 12 seated
- ◇ Whiteboard

**The Boardroom**

**The Main Hall**

**£50 per hour**

**£150 half day (4 hours)**

**£200 full day**

- ◇ 199sqm
- ◇ 225 seated
- ◇ 300 standing
- ◇ Projector
- ◇ Staging area
- ◇ Doors to garden



**The Main Hall**



### Dance Studio

**£30 per hour**

**£80 half day (4 hours)**

**£120 full day**

- ◇ 147sqm
- ◇ Sprung dance floor
- ◇ Built-in sound system
- ◇ Mirrors across one wall
- ◇ Dance bars
- ◇ Doors to courtyard
- ◇ Carpet classroom area



### **Dance Studio**



### Drama Studio

**£30 per hour**

**£80 half day (4 hours)**

**£120 full day**

- ◇ 145 sqm
- ◇ Black floor and curtains/wings
- ◇ Sound system
- ◇ Lighting system
- ◇ Doors to the garden



### **Drama Studio**



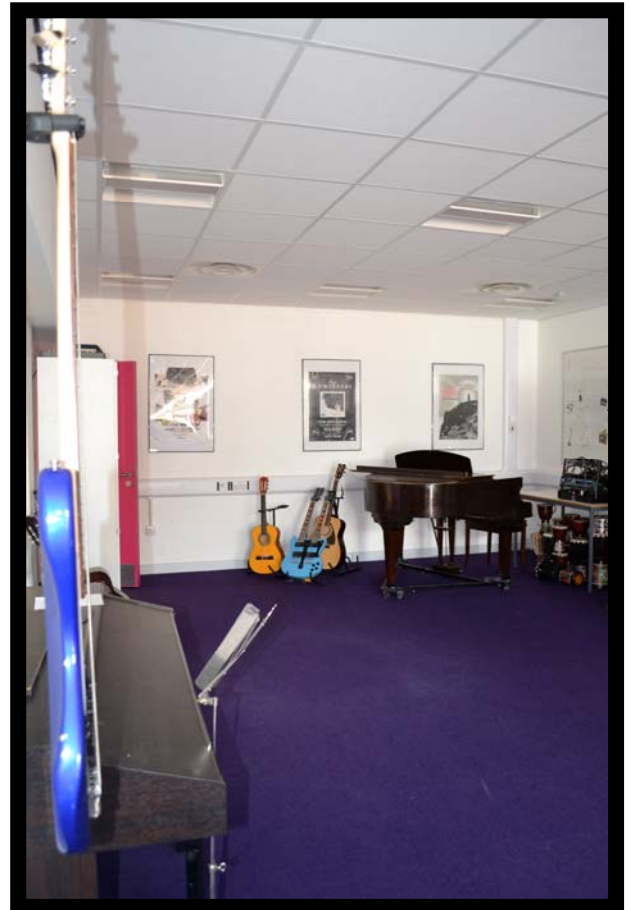
### Rehearsal Studios

**£30 per hour**

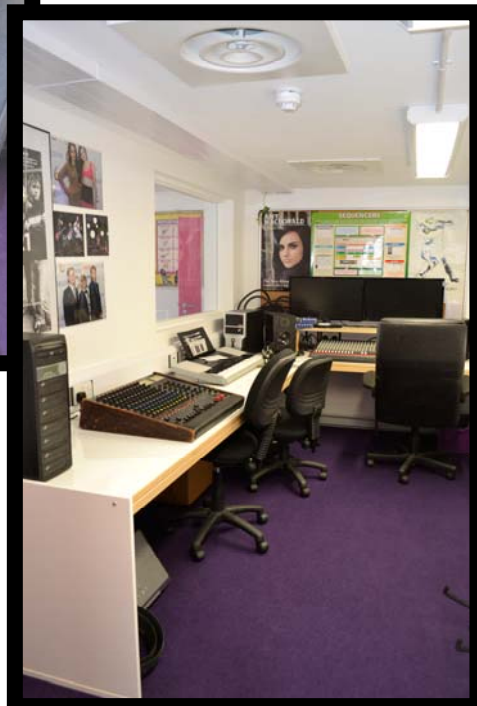
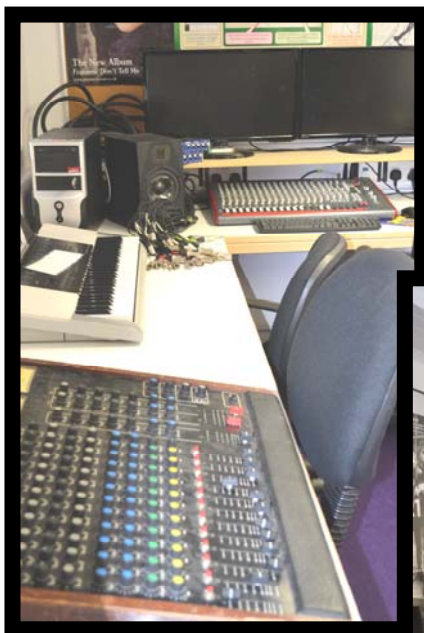
**£80 half day (4 hours)**

**£120 full day**

- ◇ 54 sqm
- ◇ 30 people maximum
- ◇ 2 rooms
- ◇ Music equipment available



### **Rehearsal Studios**



### Recording Studio

**£30 per hour**

**£80 half day (4 hours)**

**£120 full day**

### **Recording Studio**





### **2 x Cookery Suites**

**£30 per hour**

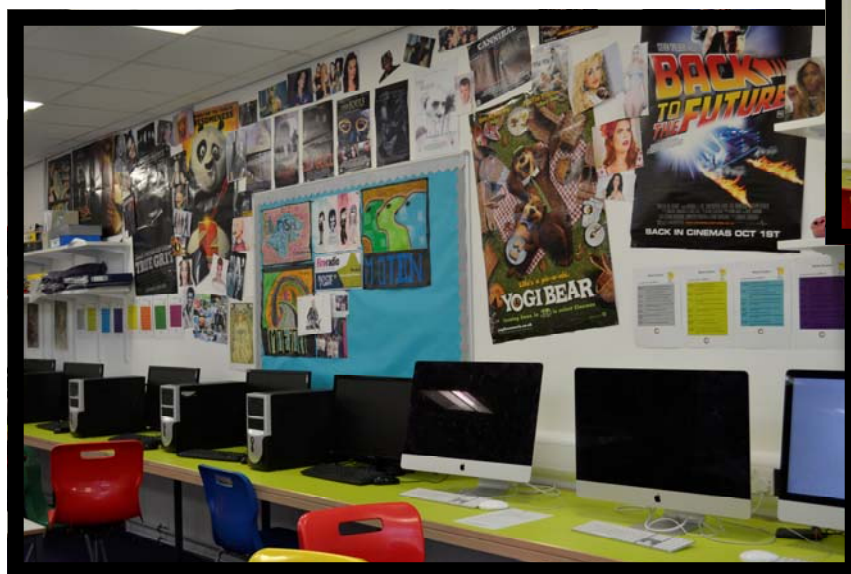
**£80 half day (4 hours)**

**£120 full day**

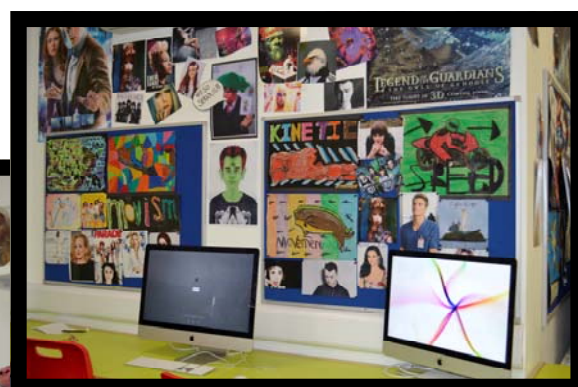
- ◇ 10 Cookers
- ◇ Display console
- ◇ Whiteboard
- ◇ Doors to garden



## **Cookery Suite**



## **Media Suite**



### **Media Suite**

**£30 per hour**

**£80 half day (4 hours)**

**£120 full day**

- ◇ 102 sqm
- ◇ Green Wall
- ◇ 30 students

We offer various outdoor sports, football and rugby pitches, an 'all weather' 5 a-side fully enclosed pitch and an athletics track to hire for evenings, weekends and/or school holidays to both clubs and individual groups. Our Outdoor Education Area is also available to hire, with its own lake.

### Outside Sports Pitches

**£30 per hour**

- ◇ Football  
(9 a-side and 11 a-side)
- ◇ Rugby
- ◇ Athletics Track



## Sports Pitches

### Multi-Use Games Area

Monday to Thursday      £35 per hour

6pm-10pm

Friday to Sunday      £20 per hour

- ◇ Tarmac floor
- ◇ 3 metre fence surround
- ◇ Marked out for Football, Tennis x 3, Netball x 3 and Hockey



### Indoor Sports Classroom

- ◇ Doors to sports field/terrace
- ◇ Overhead projector
- ◇ Learning areas
- ◇ Table tennis x 3 tables
- ◇ Snooker x 3 tables
- ◇ Darts
- ◇ Rowing machines
- ◇ Whiteboard
- ◇ Removable seating



## Sports Classroom



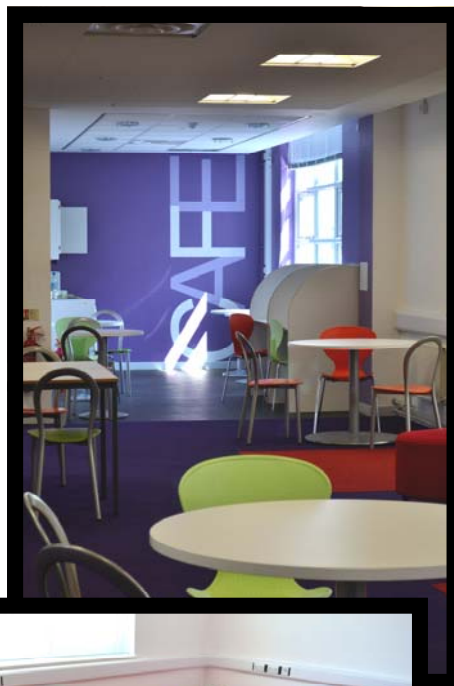
## 6th Form Centre

**£50 per hour**

**£150 per half day (4 hours)**

**£200 whole day**

- ◇ *Boardroom*
- ◇ *Open learning space*
- ◇ *Self contained kitchen area*
- ◇ *Classroom*
- ◇ *Whiteboards*
- ◇ *Doors to The Lawn area*
- ◇ *Television*

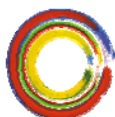


## Sports Hall

<b>1 Badminton Court</b>	<b>£ 9 per hour</b>
<b>Whole Hall</b>	<b>£40 per hour</b>
<b>1 set cricket nets</b>	<b>£20 per hour</b>

*Total hall 683sqm*

- ◇ *Football (5 a-side)*
- ◇ *Badminton (5 courts)*
- ◇ *Basketball (1 court + 1 practice area)*
- ◇ *Cricket (2 indoor practice nets)*
- ◇ *Volleyball*
- ◇ *Trampolines*



**THE BOURNE ACADEMY**

**If you are interested in viewing or hiring our Academy facilities,  
please contact the Lettings Supervisor on 01202 528554  
or email [caroline.gobell@thebourneacademy.com](mailto:caroline.gobell@thebourneacademy.com)**

**The Bourne Academy, Hadow Road, Bournemouth, BH10 5HS  
01202 528554 | [admin@thebourneacademy.com](mailto:admin@thebourneacademy.com)  
[www.thebourneacademy.com](http://www.thebourneacademy.com)**